

Tales of the Hit List

By Norm Ritchie, #2709L

mnp123@comcast.net

505 6th St., Greeley, CO 80631-2416

On a recent trip into the area of the Sioux battles with the U.S., I found a few post offices on the hit list of possible closures (as mentioned by the director and editor on page 3), and this is about their situations.

held when it was active.

The clerk in charge is worried and wonders what she will do for a job, when the closure comes. As it is, she is here all day with no shortened hours.

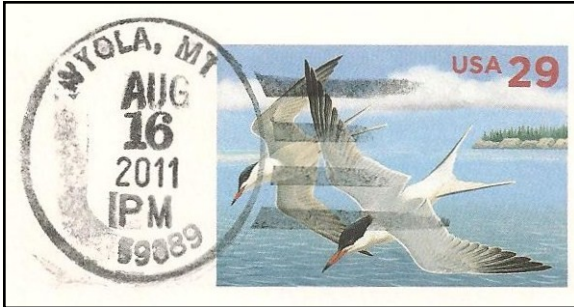
Amidon, North Dakota

Located in the SW corner of North Dakota close to the Little Missouri River sits Amidon, the smallest county seat in the entire nation.

It is close to White Butte, the highest point in North Dakota, and has the oldest continuous county fair in the history of North Dakota.

The post office sits along the side of a large long building that has a For Sale sign on the front. The clerk laughs and says that sign has been there for years.

Slope County has only this post office and a CPO, Marmarth. She thinks the post office will survive as it is a county seat. Residents go to New England, 16 miles away, for supplies as there isn't much else in Amidon, but it does have a school.



Wyola, Montana

Just over the Wyoming border along the railroad track sits this small community that shows its age. Its main street has a block of buildings, including a bank, store and gas station, all still standing and empty.

The only business is in front of what was once the store. It is the Wyola post office. The back of the building is storage for what facilities the grocery

